



GET CREATIVE

Have you fulfilled your creative knitting desires today? We've got everything you need but the sheep!

CLASS SCHEDULE • WINTER 2012



Crochet Mittens

Easy

Class #1

Mon. 6:30pm - 8:30pm

Jan. 9, 16, 23

Emily Devlin

\$45

Make a cozy warm pair of mittens to brighten your spirits this winter! In this class, suitable for those with basic crochet experience, you will learn to crochet in the round, how to make a thumb gusset, and how to add simple embellishments to your finished work. You'll soon be wanting to get started on these for next year's Christmas presents!



Toe-Up Socks

Intermediate

Class #3

Tue. 6:30pm - 8:30pm

Jan. 10, 17, 24

Arwen Golden

\$45

Learn the basics of toe-up socks and enter a whole new world of sock knitting! Sportweight yarn makes for quick and comfortable knitting.



Learn To Magic Loop

Easy

Class #5

Sat. 1:00pm - 3:00pm

Jan. 14

Amanda Weir

\$30

Have you heard of this Magic Loop technique? Want to know what everyone is talking about? Amanda will show you a great new way to knit in the round!



My First Mittens

Easy

Class #2

Mon. 6:30pm - 8:30pm

Jan. 9, 16, 23

Michelle Corcoran

\$45

A simple basic mitten pattern for beginning knitters. This is a full mitten, not a fingerless mitt.



Knitting Your First Sweater

Easy

Class #4

Wed. 6:30pm - 8:30pm

Jan. 11, 18, Feb. 1, 15, 22

Mary Taylor

\$65

Are you mystified by sweater shaping? Not sure how to make sure your gauge is right? This easy pullover pattern gives you the option of a pretty color stranded pattern, color blocking or a solid color. Learn pattern reading, gauge, shaping, and seaming and feel confident making sweaters.



Learn To Knit Baktus Scarf

Beginner Knit

Class #6

Thu. 6:30pm - 8:30pm

Jan. 19, 26, Feb. 2

Amanda Weir

\$45

Learn to knit while working on a nice cushy scarf. It'll keep you warm all winter. Be sure to pick some nice bright yarn!

Yarn Garden University Registration Procedures

Our teachers have requested that students come prepared with materials to their first class. They have a lot of teaching to get in, and request that you purchase any materials in advance.

Our staff will be happy to discuss your class materials with you before your class. Payment is required at registration.

As many of you have found out, the classes fill very quickly, so you should register as soon as possible. We are able to register you over the phone with a credit card, or online at our website, yarn garden.net.

Our cancellation policy provides you with a full refund within 7 days of your class. After that, if we are able to fill your seat with someone on the waiting list, you will still receive a full refund. If we are unable to fill your seat, the fee is forfeited.

**Sign up for classes online
at yarn garden.net**

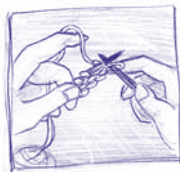
Key to Class Levels

Beginner – For new knitters and crocheters.

Easy – Can cast on, knit, purl, increase, decrease, bind off, basic crochet stitches.

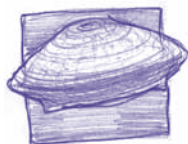
Intermediate – Have completed a project. Can read a pattern, is proficient and at ease with knitting and crochet.

Experienced – Comfortable with many advanced techniques and stitches.



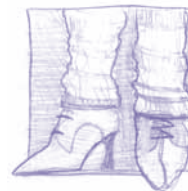
Continental Knitting Workshop *Easy*

Class #7
Wed. 6:30pm - 8:30pm
Jan. 25
Mary Taylor **\$30**
Learn how to knit faster and more comfortably by holding your yarn on the left side in the continental style. We will learn knit, purl, and rib stitches and try color stranded knitting.



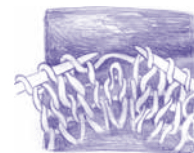
Learn To Knit Slouchy Hat *Beginner Knit*

Class #8
Mon. 6:30pm - 8:30pm
Jan. 30, Feb. 6, 13
Michelle Corcoran **\$45**
An easy learn to knit for those with no knitting experience but an eagerness to learn. After you've knit one, you'll be ready to make many other hats!



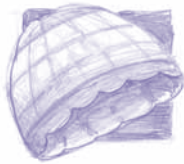
Leggings (EZ's Nether Garments) *Easy*

Class #9
Mon. 6:30pm - 8:30pm
Feb. 6, 20, 5
Emily Devlin **\$45**
Join us in making one of Elizabeth Zimmermann's lesser known patterns, the nether garments. In addition to making an incredibly warm, functional garment, you will learn to follow a pattern, knit in the round, measure gauge, increase, and decrease. The pattern is a versatile formula, which means you can use any weight of yarn with it, and can make these leggings for anyone: adults, children or babies.



Fix Those Mistakes! *Easy to Experienced*

Class #10
Wed. 6:30pm - 8:30pm
Feb. 8
Mary Taylor **\$30**
If you are paralyzed by fear any time a stitch slips off your needle, this class is for you. We will make a nice pot of herbal tea and calmly learn how to untwist stitches, pick up dropped stitches, rip back, and get those stitches back onto your needle. Conquer your fear of mistakes!



Double Knitting 101: Arches Hat

Intermediate

Class #11
Thu. 6:30pm - 8:30pm
Feb. 9, 16, 23
Amanda Weir \$45
Learn to make and shape a completely reversible fabric while knitting a warm, cozy hat.



Pattern Reading Workshop - Crochet

Easy to Experienced

Class #12
Mon. 6:30pm - 8:30pm
Feb. 13
Emily Devlin \$30
If you know how to crochet but struggle with following patterns, this handy workshop is for you. Emily will go through some common crochet patterns and explain how to follow them, as well as discussing charts vs. worded patterns, gauge, measurements, and yarn requirements. Feel free to bring any specific patterns you have questions on.



Pattern Reading Workshop - Knit

Easy to Experienced

Class #13
Mon. 6:30pm - 8:30pm
Feb. 27
Emily Devlin \$30
Reading a pattern can sometimes feel like learning a new language. In this helpful workshop, Emily will take you through the ins and outs of abbreviations, charts, quirky ways of working, gauge, finished measurements, yarn requirements, and more. If you feel confident knitting but baffled by patterns, this is the workshop for you. You will go through some typical patterns and students are also encouraged to bring in their own specific questions.



First Sweater From The Top Down

Easy

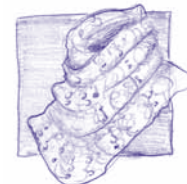
Class #14
Mon. 6:30pm - 8:30pm
Feb. 27, Mar. 5, 12
Michelle Corcoran \$45
A great first sweater project using the Tappan Zee pattern. This short sleeved sweater is perfect for layering in winter or wearing for a little style in spring.



Colorwork Socks

Intermediate

Class #15
Wed. 6:30pm - 8:30pm
Feb. 29, Mar. 7, 14
Mary Taylor \$45
Learn how to work color stranded patterns - socks are a perfect size to play with color and pattern. You will learn several ways to hold and tension your yarn. These work up easily in worsted weight yarn.

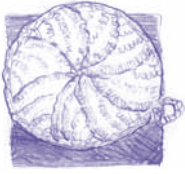


Lace Knitting 101: Twig Cowl

Easy

Class #16
Thu. 6:30pm - 8:30pm
Mar. 8, 15, 22
Amanda Weir \$45
Learn to knit lace with this quick one skein project. A great way to use up some sock yarn or a great excuse to buy more!





Brioche Stitch Hat

Easy to Intermediate

Class #17

Mon. 6:30pm - 8:30pm

Mar. 12, 19, 26

Emily Devlin

\$45

Brioche stitch is a cozy, bulky stitch perfect for winter hats, scarves, and more! While it can be done in a solid color, it easily lends itself to two-color knitting for a striped effect, and the fabric is extra cozy as well as reversible. Learn how to do a basic brioche stitch and then practice your skills in making a brioche hat. In addition to the brioche stitch, you will learn basic decreases, knitting in the round, and knitting on double pointed needles.



Learn To Crochet Headband w/ Flower

Beginner Crochet

Class #18

Mon. 6:30pm - 8:30pm

Apr. 2, 9

Emily Devlin

\$35

Learn to crochet while making an adorable, trendy headband. You will learn to read a basic pattern, chain, single crochet, double crochet, slip stitch, as well as how to crochet back and forth and in the round. You will also learn to embellish these with some simple crochet flowers.



Sale Yarns

We keep a large stock of sale yarns at all times for you bargain hunters! These sale yarns are replaced frequently as we make

room for all the new yarns that come in weekly.



Private Lessons

Do you need one-on-one instruction? Help with a technique?

Yarn Garden has private instruction available at \$25 per hour. Call or stop by to set up your appointment.



Thanks, Customers!

We're still going strong with our monthly \$100 giveaway. Sign a ticket every time you come in shopping. Who knows, this might be your lucky month to win a big shopping spree at the Yarn Garden!

Stay Up to Date!

Tune into the Yarn Garden Blog to see the latest in the rampant creativity going on around the store. You can get there through our website at yarn garden.net or on Ravelry join us at "Yarn Garden Oregon."

Are you on the enews e-mail list?

Sign up to get quarterly e-mails announcing each newsletter so you won't miss any amazing classes! Please help us keep our e-mail list up to date and let us know when your address changes.

Newsletter Staff

Editor

Jo Hartman

Graphics/Layout

Jill Carter

Computer Support

Raoul Berman

Copyist/Schedules

Kimberly

Swartzlander

All drawings are property of Yarn Garden

Winter Hours

Mon. - Thurs. 10:00am - 7:00pm

Fri. 10:00am - 6:00pm

Tues. 6:30 - 8:30pm KnitNite

Sat. 10:00am - 5:00pm

Sun. 12:00 noon - 5:00pm

Yarn Garden

503-239-7950

1413 SE Hawthorne Blvd.

Portland, OR 97214

www.yarn garden.net

sales@yarn garden.net